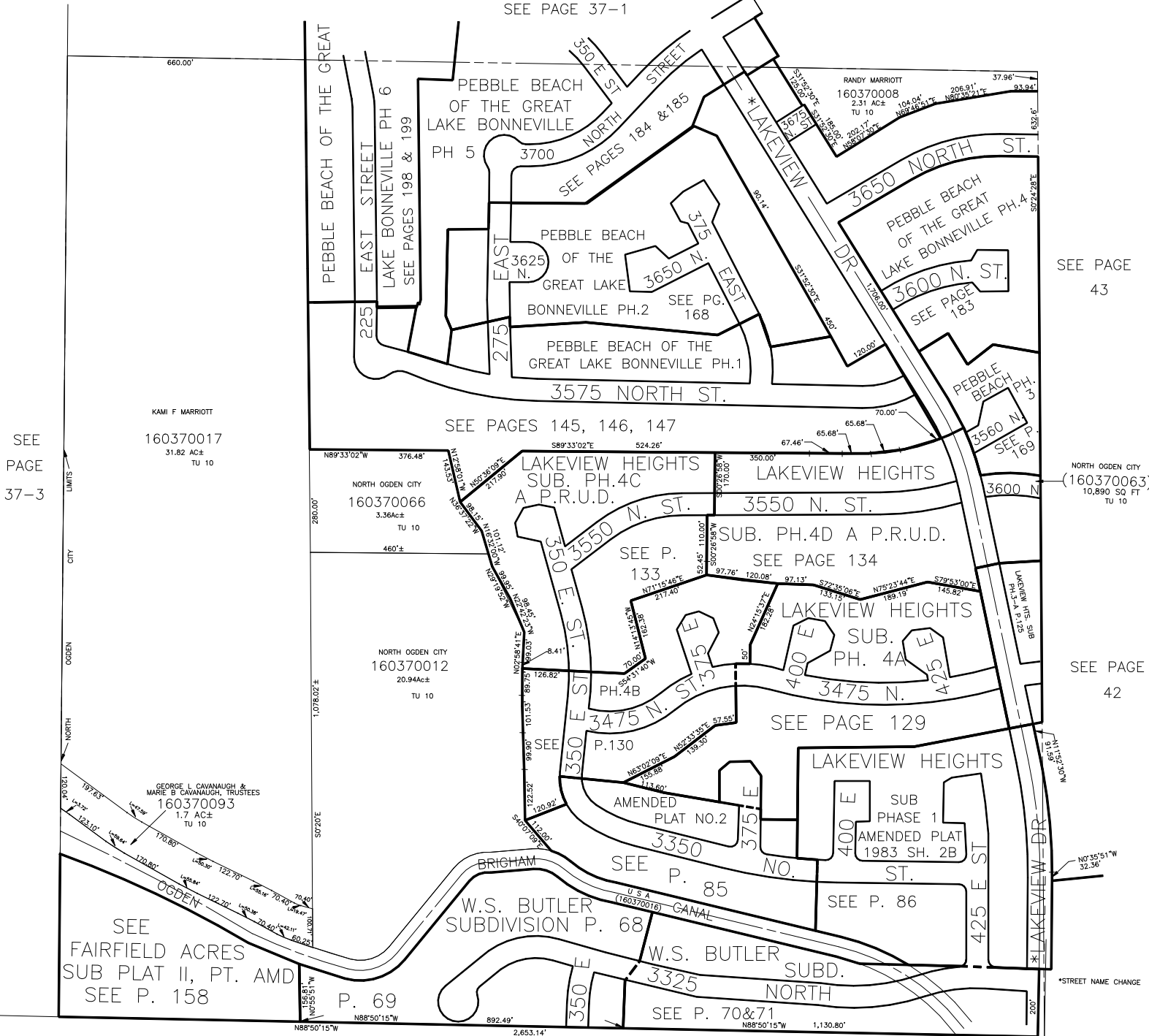


S.E. 1/4  
SECTION 20, T.7N., R.1W., S.L.B.&M.

IN NORTH OGDEN CITY  
SCALE 1" = 200'

TAXING UNIT: 03,10

SEE PAGE 37-1



SEE PAGE 37-3

SEE PAGE 43

NORTH OGDEN CITY (160370063) 10,890 SQ. FT. TU 10

SEE PAGE 42

\*STREET NAME CHANGE

SEE BOOK 17, PAGE 38